

'Nature-istic'
boutique
apartment



Stonecraft
WOODS
BANJARA HILLS



Table of Contents



Introducing Stonecraft Woods Banjara Hills

Floor plan layout



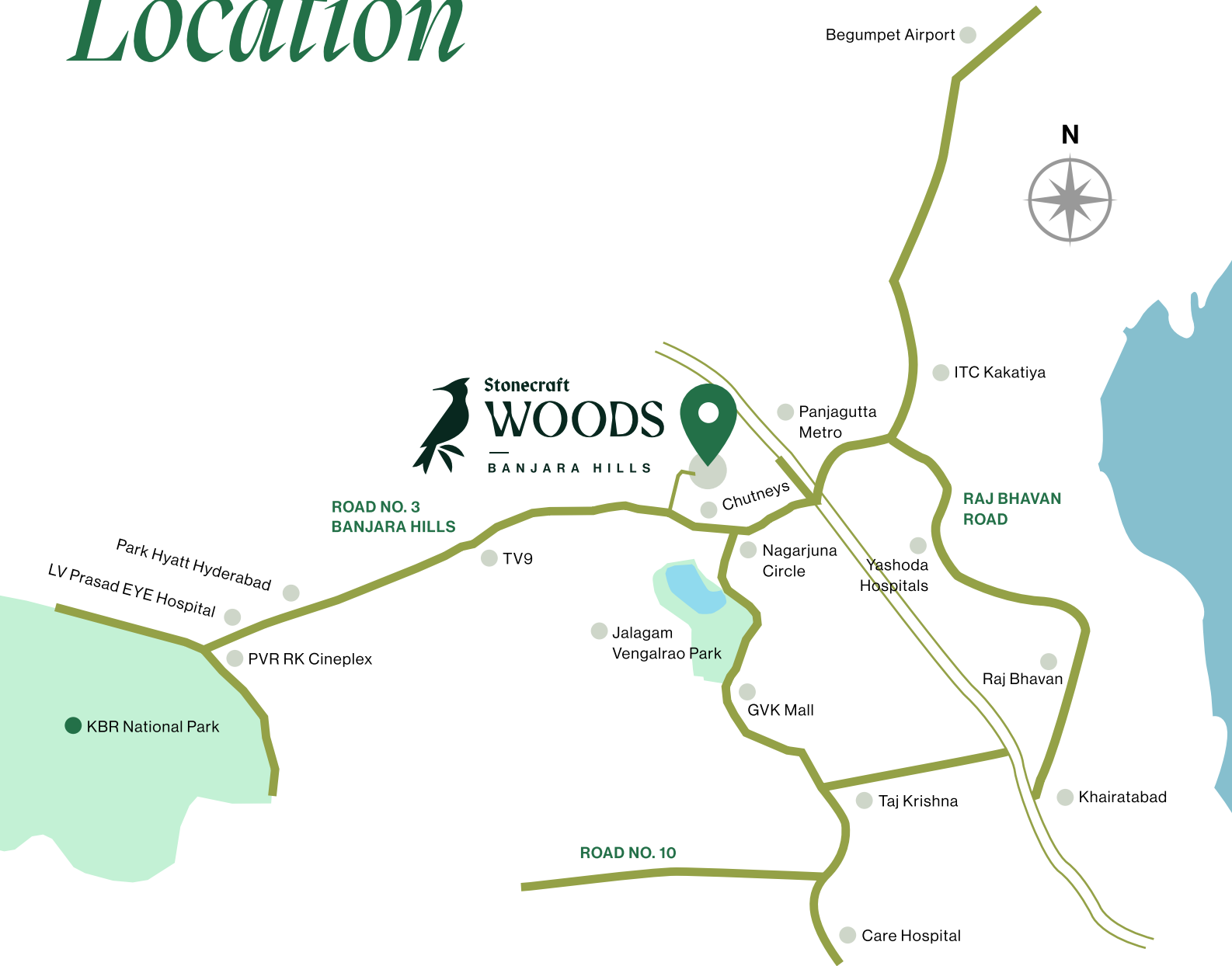
Gallery

Specifications, infrastructure & amenities

*We are catalysts of good design
leading to good lifestyles- right from
developing villa plots to...*



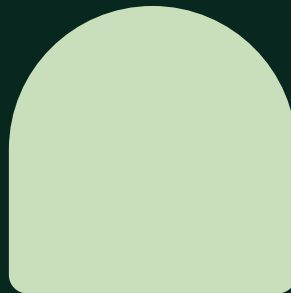
Location



Proximity, Stonecraft WOODS Banjara Hills

● Panjagutta Metro	< 5mins	● JV Park	< 5mins
● KBR National Park	< 5mins	● Nagarjuna Circle	< 5mins
● Park Hyatt Hyderabad	< 5mins	● PVR RK Cineplex	< 5mins
● GVK Mall	< 5mins		

*Building
boutique
apartment.*



*Keeping people at
the heart of it by...*

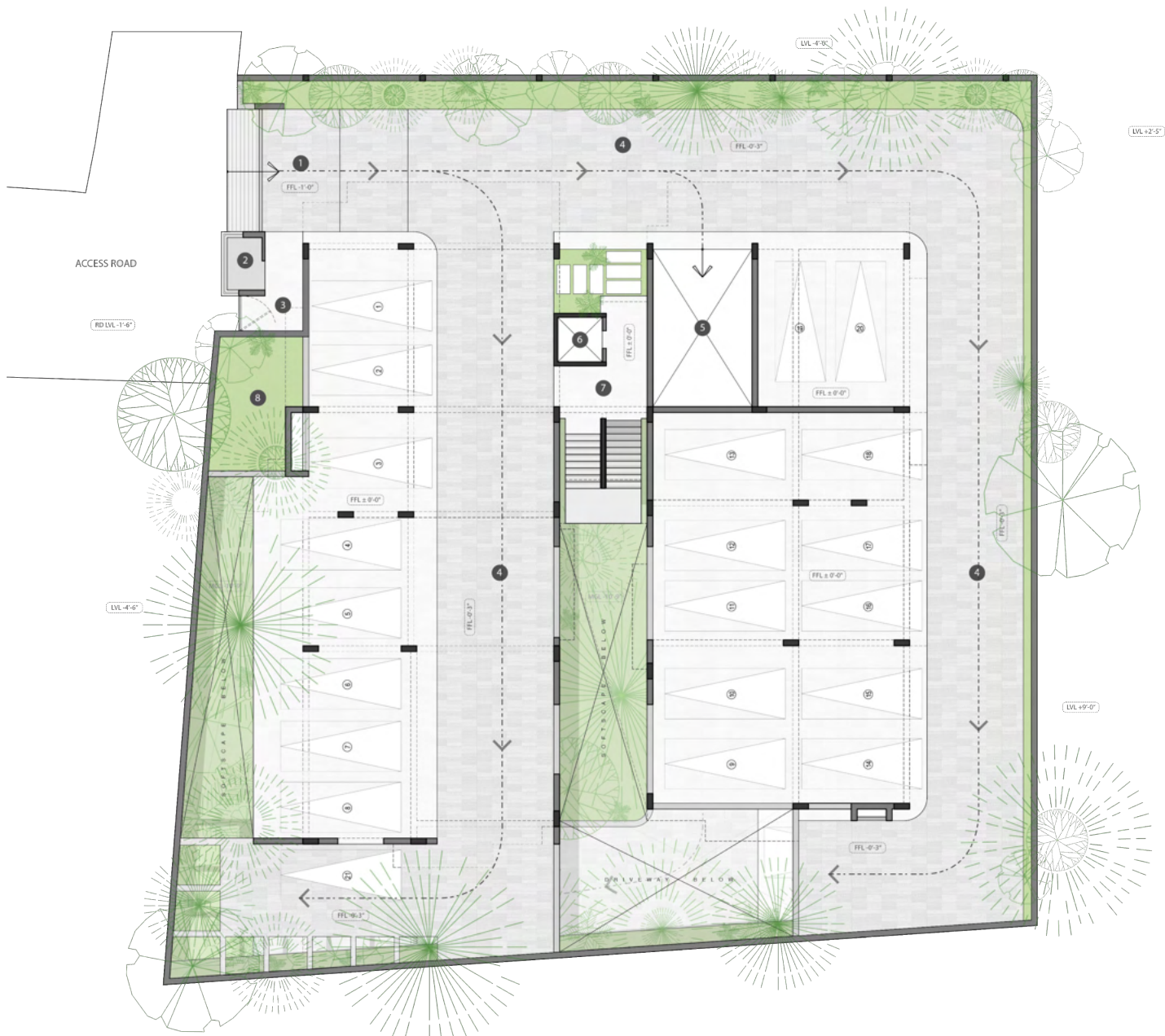




*Our newest venture is
Woods Banjara Hills:
boutique apartment -
'Nature-istic' 3-4BHKs in
upscale Banjara Hills.*

STILT FLOOR PLAN

1. Vehicle Entrance
2. Security Cabin
3. Pedestrian Entrance
4. Driveway
5. Car Lift
6. Lift
7. Lobby
8. Services



TYPICAL FLOOR PLAN



EAST ENTRY
3970 SFT

WEST ENTRY
3540 SFT

TYPICAL FLOOR PLAN - EAST ENTRY

- 1. Entry Foyer
- 2. Drawing 12'-9"X15'-0"
- 3. Puja 5'-9"X5'-3"
- 4. Living 13'-6"X18'-0"
- 5. Dining 16'-6"X10'-6"
- 5a. Sitout
- 6. Kitchen 12'-0"X15'-0"
- 6a. Utility 8'-3"X6
- 6b. Store 8'-9"X7'
- 6c. Wash Area
- 7. Master Bedroom 14'-3"X1
- 7a. Dress 6'-6"X5
- 7b. Closet 12'X9"X
- 7c. Sitout
- 8. Bedroom - 2 18'-0"X1
- 8a. Closet 8'-3"X7'
- 8b. Toilet
- 9. Bedroom - 3 15'-0"X1
- 9a. Toilet
- 10. Study/Home Office 7'-6"X12
- 11. Powder Room
- 12. Lift



TYPICAL FLOOR PLAN - WEST ENTRY

- 1. Entry Foyer
- 2. Drawing 12'-9"X15'-0"
- 3. Puja 5'-9"X5'-3"
- 4. Living 13'-6"X18'-0"
- 5. Dining 9'-0"X17'-3"
- 5a. Sitout
- 6. Kitchen 8'-3"X14'-3"
- 6a. Utility 8'-3"X5'-9"
- 6b. Store 5'-3"X7'-3"
- 6c. Wash Area
- 7. Master Bedroom 12'-0"X21'-9"
- 7a. Closet 6'-6"X9'-6"
- 7b. Toilet
- 7c. Sitout
- 8. Bedroom - 2 18'-9"X12'-0"
- 8a. Closet 9'-9"X7'-3"
- 8b. Toilet
- 9. Bedroom - 3 13'-6"X13'-6"
- 9a. Toilet
- 10. Study/Home Office 7'-6"X10'-6"
- 11. Powder Room
- 12. Lift



Gallery



Boutique apartments are small one-of-a-kind personalized living spaces with lush and luxurious design which further accentuates the atmosphere of the city.

Gallery



Enable you to experience the free spirited city surrounded by modern functional luxury that stays faithful to the cultural and historical fabric of the city.

Gallery



4000 sq. ft. of meticulously planned spaces for family time... and solitude. Experience a home beyond walls.

Specifications

STRUCTURE

- RCC framed structure to withstand wind & seismic loads.

SUPER STRUCTURE

- AAC brick masonry / Clay Burnt Brick.

WALL FINISHES

- External walls finished in cement plaster and weather proof texture paint.
- Internal walls finished in cement/gypsum plaster and smooth putty finishes with roller applied acrylic emulsion paint.
- Feature walls with exposed brick.

FLOORING

- Living, dining, bedroom shall be polished Kota stone slabs.
- Kitchen and Utility Vitrified tile flooring of size 600x600.
- Polished natural stone in Lobbies, corridors and stair cases.

DADO

- Dado in all bathrooms, kitchen and utility with vitrified tile of size 600x600.

DOORS & WINDOWS

- Main door will be wooden frame with panel type shutters and necessary hardware fittings and fixtures.
- All internal doors will be in wooden frame with flush shutters and necessary hardware fittings and fixtures.
- All windows will be aluminium/UPVC system.
- Sliding french door in aluminium/UPVC system with provision for mosquito proof mesh.

CP FIXTURES & SANITARY

- All bathrooms to be provided with wash basin, wall mount WC with concealed flush tank, shower and CP fixtures of KOHLER or equivalent make.

ELECTRICAL

- Concealed copper wiring with PVC insulated wires and modular switches of Legrand or equivalent make.
- Sufficient power outlets and light points as per furniture layout shall be provided.
- Necessary electrical, drain lines and sleeves for coolant lines in the beams & walls shall be provided to install split A/c's system in living area, drawing, dining and in all bedrooms.
- Provision for geysers and recessed exhaust fans in all toilets shall be provided.
- Distribution boards with MCB's shall be provided for each apartment unit.
- Power points for cooking hob, exhaust hood, refrigerator, mixer/grinders, water purifier, oven in kitchen shall be provided.

UTILITY AREA

- Granite platform with stainless steel sink and provision for washing machine, dish washer.

FALSE CEILING

- All bathrooms and utility area will have grid false ceiling.

LIFTS

- 1 High speed automatic passenger lift of Schindler or equivalent make.

Infrastructure & Amenities

INFRASTRUCTURE

TELECOM

- TV points in the living area, drawing area and master bedroom.
- Internet point in living & master bedroom.

WATER SUPPLY

- Treated water will be made available through water softening plant with individual water meters.

GENERATOR

- 100% D.G. backup shall be provided for the entire project with individual meters.

SECURITY & BMS

- Sophisticated round the clock security system.
- Surveillance cameras at the main security gate, entrance of each floor lobby and passenger lifts.
- Building management system shall be provided.

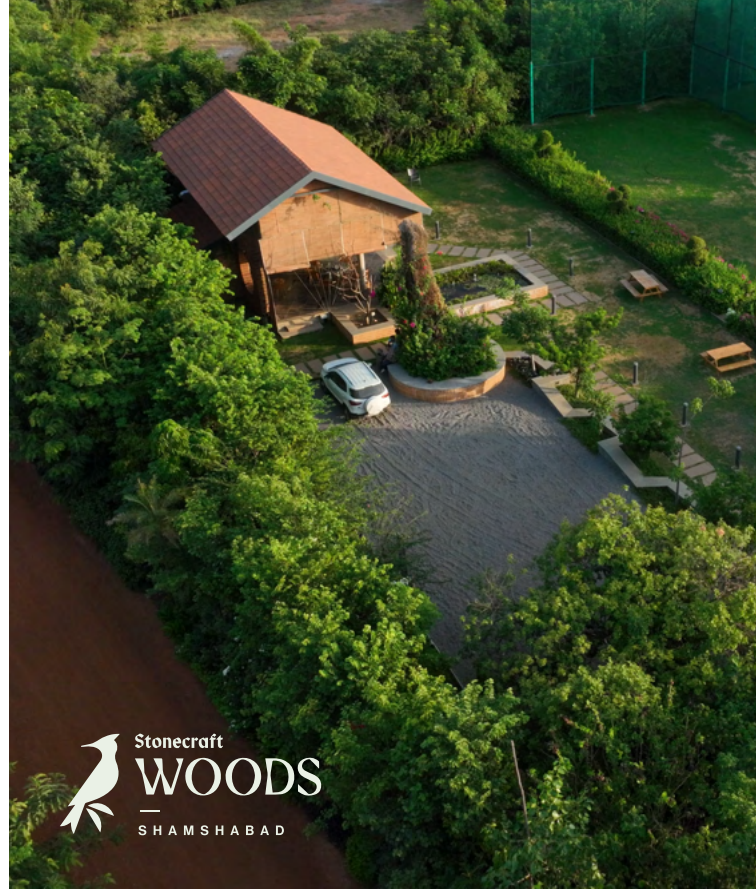
AMENITIES

- Common party area on the terrace
- Gym/Yoga Room
- Terrace Garden
- Maintenance Office
- Power Back Up

Ongoing Projects

*Farm plots amid
the Miyawaki forest.*

**Stonecraft WOODS
Shamshabad**



*Luxury plots
beside a lake.*

**Stonecraft WOODS
Indresham**


Launched.

*Access to nature –
from every window,
from every balcony.*

Reach out to know more.


+91 97029 55555

 stonecraftgroup.com

 [/stonecraftgroup](https://www.linkedin.com/company/stonecraftgroup)

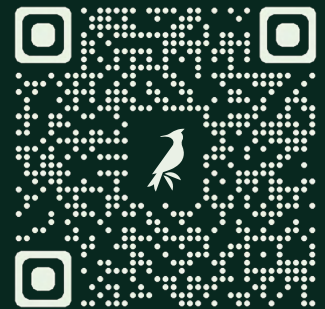
 [@stonecraftgroup](https://www.instagram.com/stonecraftgroup)

 [/stonecraftgroup](https://www.facebook.com/stonecraftgroup)

 Ground Floor, Nava Bharat Chambers,
Raj Bhavan Road, Somajiguda,
Hyderabad, Telangana 500082

 **Stonecraft**
Group

Get to know us!



Discover Further!

